

# RONEX Ronex International

"Your Trusted Laboratory Partner"



## Shop Address:

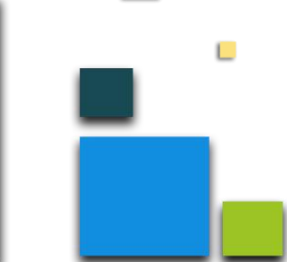
47/2, Fazli Rabbi Road, Motijheel, Dhaka-1000. Bangladesh

Cell: +880 1811155717; 01617522392

Email: [ronexbd@gmail.com](mailto:ronexbd@gmail.com); [ronexbd@live.com](mailto:ronexbd@live.com)

Web: [www.ronexbd.com](http://www.ronexbd.com) | Skype: [ronexbd](https://www.skype.com/name/ronexbd)

[Facebook](#) | [Twitter](#) | [Linkedin](#) | [Instagram](#) | [YouTube](#)



10  
PRODUCTS CATALOGUE



**A LITTLE BIT**

We, Ronex International introducing ourselves to you as a scientific company. We are involved in Sales & Marketing of various types of scientific products for any Industry sector. Ronex International started its operation as an Importer, Distributor & Supplier of various types of Laboratory digital instruments & materials. Basically, we deal in scientific products such as Electronic Digital Scales, Laboratory QC Instruments, Glassware and Chemical so on, for Garments Factory, Textile Industry, Composite Mill, Knitting & Dyeing Industry, Pharmaceutical Industries, Medical & Hospital sector, Research Institutes, NGO & Universities.

**Company Profile**

Company established in 2006 in Bangladesh. We are long time making good business in this field. We obtained customer satisfaction. Quality and reliability is our tradition. We always protect buyer interest for regular business and you will get always our cooperation. We always try to maintain Quality product, Reasonable price, Commitment and best services. Customer satisfy is our obtain.

**We Make Quality Brand**

We never compromise with the quality of our supply products, and hold the moral of fair business practices and ethics in a very high position. Providing you the best quality products at reasonable price is our mission. Our first priority is product's quality & service and we sell the Benefit of products. Our motto is long term relation with customers than business. We always provide back up support and after sales service and stands as a reliable support to you at any time. We are taking it as a challenge to satisfy your needs. Please give us a call to discuss your requirements.

**Our Mission**

To achieve the heights and peaks of everlasting success. We are providing our valued customers the quality products. Timely service and related technical service thru product development, innovation and acquisition of technology. The contentment of our customers as well as our employees is a major part of our mission.

**Business Activities**

Importer, Indenter, Distributor, Wholesaler, Retailer @ Supplier.

**Business Field**

Textile, Knitting, Dying, Spinning, Garments, Water Treatment Plant, Pharmaceuticals, Medical, School, College, University, Cement, Paper Industry, Food processing, Educational Institute, Environment, Agriculture, Paltry Feed, etc.....

WE KEEP  
**OUR PROMISE**

**QUALITY**

We promise to consistently deliver the highest quality products in the industry.

**SERVICE**

We promise to provide you with the very best customer service experience.

**DEPENDABILITY**

We promise to be the company that you confidently can depend on.

**INNOVATION**

We promise to continually innovate and bring you cutting edge technology.

**Proposals**



**Laboratory Glassware & Chemical**



**Laboratory Testing Equipment**



**Electronic Weighing Scale & Balance**



**Textile Testing Consumable**



**Electrical Measurement Equipment**

# Electronic Weighing Scale & Balances



**BIZARBA BCII 800 EE  
 Electronic Retail Scales**  
 With display, keyboard and printer on a mounted stand.



**MOTEX ML-G Series  
 Label Printing Scale**  
 Capacity: 15/30kg  
 Res: 0.002/0.005



**Economic Series @ Setra  
 Digital Analytical & Precision  
 Balances**  
 Cap: 220g/320g  
 Res: 0.001g/0.0001g

**Pioneer Series @ Setra  
 Digital Analytical & Precision  
 Balances**  
 Cap: 220g/320g  
 Res: 0.001g/0.0001g



**EW Series @ Setra  
 Waterproof Balance**  
 Cap: 15/30kg  
 Res: 1g



**BL Series @ Setra  
 Digital Precision Balance**  
 Cap: 0.01g  
 Res: 600g





**EK Series AND Digital Precision Balance**  
 Cap: 200/300g  
 Res: 0.01g



**EK-I Series AND Digital Precision Balance**  
 Cap: 300/600g  
 Res: 0.01g



**BLB Series @ Setra Digital Bench Weighing Scale**  
 Cap:  
 Res



**EK-H Series AND Digital Balance**  
 Cap; 500/6000g  
 Res: 0.1g/1g

**MACS Series DIGISCALE Digital Balance**  
 Cap: 3/6/15/30kg  
 Res: 0.1/0.2/0.5/1g



**MACS-C Series DIGISCALE Digital Counting Scale**  
 Cap: 15kg/30kg  
 Res: 0.5g/1g



**TMS Series @ Setra Bench Weighing Scale**  
 Cap: 60kg  
 Res: 2g



**RTX Series @ Setra Digital Platform Weighing Scale**  
 Cap: 100/300/600kg  
 Res: 10/20/50/100g



**RTX-BD Series @ Setra Digital Industrial Floor Weighing Scale**  
 Cap: 1000kg/2000kg  
 Res: 50g/100g/200g

**PW Series @ Setra Portable Truck Scale**  
 Cap: 5t/10t/15t/20t  
 Res: 0.5kg/1kg/5kg/10kg/20kg/50kg



**EKI Series AND Electronic Precision Balance**  
 Cap; 300/600g  
 Res: 0.01g



**EK Series AND Digital Balance**  
 Cap; 500/6000g  
 Res: 0.1g/1g



## Laboratory Testing Measuring Equipment



**PEN PH METER**  
**Model: PH-222**

- \* 0 to 14.00 pH.
- \* ATC auto temperature compensation
- \* Auto calibration for pH 4, pH 7 or pH 10.
- \* Meter with pH electrode, all in one.
- \* Easy replacement for the pH electrode.



**PH-mV-TEMP. METER**  
**Model: PH-206**

- \* pH: 0 to 14.00 pH, mV: -1999 to 1999 mV Temp. : 0 to 100.0 oC.
- \* Manual/Auto Temp. Compensation.
- \* Size : 160 x 80 x 35 mm.



**PH METER**  
**Model: PH-207**

- \* 0 to 14 pH x 0.01 pH, 1,999 mV.
- \* Max., Min., Memory recall button.
- \* pH, mV, Temp., manual Temp. adj. or ATC.
- \* PH electrodes (optional)

**PH Meter Bench type**  
**RS232/USB, Data logger**  
**Model: BPH-231**

- \* Professional bench type meter with large LCD display with green color backlight, easy reading.



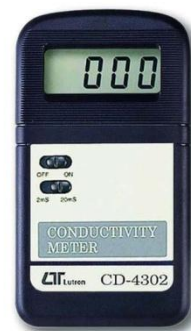
**CONDUCTIVITY METER**  
**Model: PCD-431**

- \* 2 ranges: 2,000 uS, 20 mS.
- \* Temperature measurement, oC/oF.
- \* Carbon rode electrode, high reliability.
- \* Data hold, Record (max., min.).
- \* IP-67 Water resistance heavy duty.



**CONDUCTIVITY METER**  
**Model: CD-4301**

- \* 4 ranges: 200 uS, 2mS, 20mS, 200mS.
- \* Automatic temperature compensation



**Conductivity Meter**  
**Model: CD-4302**

- 12.5 mm (0.5 ") LCD, max. Display 1999.
- 2 ranges: 0 -1.999 mS, 2 -19.99mS.
- Automatic temperature compensation.
- Size: 131 x 70 x 25 mm, Pocket size.



**CONDUCTIVITY /TDS/ SALT METER Portable Type**  
**Model: YK-22CTA**

- CD, TDS, Salt measurement.
- Conductivity : 200 uS/2 mS/20 mS/200 mS.
- Salt: 0 to 12 % salt (% weight).
- LCD with green light backlight, easy reading



**Conductivity/TDS Meter**  
**Bench type**  
**RS232/USB, Data logger**  
**Model: BCT-4308**

- \* Professional bench type meter with large LCD display with green color backlight, easy reading.
- \* Two in one: Conductivity and TDS (Total dissolved solids), measurement.

**Dissolved Oxygen Meter Pen Type  
Model: PDO-519**

- \* Range: 0 to 20.0 mg/L x 0.1 mg/L.
- \* Temperature: 0 to 50 oC, oC/oF.
- \* Automatic temperature compensation.
- \* Data hold, Record (max., min.).



**Dissolved Oxygen Meter Pocket Type  
Model: DO-5509**

- \* Range: 0 to 20 mg/L.
- \* ATC. Resolution: 0.1 mg/L.
- \* Pocket size, 13 mm LCD.
- \* Size : 131 x 70 x 25 mm.



**Dissolved Oxygen Meter Portable Type  
Model: DO-5510**

- \* Dissolved oxygen range: 0 to 20mg/L.
- \* Max., Min., Memory recall button.
- \* DO, Oxygen in air, Temp., ATC, Auto Cal. % salt.
- \* Diaphragms & electrolyte included.



**Thermometer Pen Type  
Model: PTM-816**

- \* Cooperate with the type K Temp. Probe.
- \* Range: -50 to 230 oC x 0.1 oC.
- \* Unit: oC, oF. Internal adjustment.
- \* Hold function to freeze display value.



**4 channels Thermometer  
Model: TM-946**

- \* Type K/J, Pt 100 ohm, 4 display.
- \* 4 channels (T1, T2, T3, T4), T1-T2, oC/oF.
- \* Display 4 channels Temp. At the same time.
- \* Type K: -100 to 1300 oC.
- \* Type J: -100 to 1200 oC.



**Digital Thermometer Type K/J/R/E/T  
Model: TM-9126**

- Type K: -50 to 1300oC, 0.1 oC/0.1oF
- Type J: -50 to 1150oC, 0.1 oC/0.1oF.
- Type T: -50 to 400oC, 0.1 oC/0.1 oF.
- Type E: -50 to 900oC, 0.1 oC/0.1 oF.
- Type R: 0 to 600 oC, 1 oC/1 oF.

**INFRARED THERMOMETER  
Model: TM-919AL**

- \* Non contact temperature measurement.
- \* With red Laser target light guide.
- \* oC/oF, Max., Min., Rel., Data hold.
- \* Range: -20oC to 400oC, 0.1o resolution.



**Dual laser targeting + type K thermometer  
1,000 oC INFRARED THERMOMETER  
Model: TM-969**

- \* 1,000 oC no contact infrared Temp. Measurement.
- \* 1400 oC type K thermometer.



**ANEMOMETER (w/o Temp.)  
Model: AM-4201**

- \* 0.4 to 30.0 m/s, m/s, ft/min, km/h, knots, Data hold, 18 mm LCD.
- \* Low-friction ball-bearing vane.



**ANEMOMETER (w/ Temp.)  
Model: AM-4202**

- \* 0.4 to 25.0 m/s, m/s, ft/min, km/h, knots, Temperature, Data hold, 18 mm LCD.
- \* Low-friction ball-bearing vane.



**HOT WIRE ANEMOMETER, air flow  
Model: YK-2004AH**

- \* Air velocity, Air flow (CMM, CFM), Temperature.
- \* Hot wire anemometer, high precision for low air velocity measurement.



**CUP ANEMOMETER, BAROMETER, HUMIDITY TEMP. Meter  
Model: ABH-4224**

- \* Air velocity: 0.9 to 35.0 m/s, ft/min., km/h, mile/h, knots.
- \* Barometer: 10 to 1100 hPa, mmHg, inHg.
- \* Humidity: 10% to 95% RH, Dew.
- \* Temperature: 0 to 50 oC, oC/ oF.



**SOUND LEVEL METER, economical type**  
**Model: SL-4010**

- \* Frequency & time weighting meet IEC 61672 class 2.
- \* 35 to 130 dB, 3 ranges, Data hold.
- \* A frequency weighting, Fast time weighting.
- \* Size : 250 x 83 x 32 mm.



**SOUND LEVEL METER Auto Range & RS-232**  
**Model: SL-4012**

- \* 30 - 130dB, Auto range, Manual range.
- \* Frequency & time weighting meet IEC 61672 class 2.
- \* A & C frequency weighting.
- \* Fast / Slow time weighting, Data hold.



**5 in 1 METER**  
**Model: LM-8102**

- \* Sound level meter: 30 to 130 dB, auto range.
- \* Humidity: 10 to 95 %RH Temp... (oC/oF).
- \* Anemometer: 0.4 to 30 m/s, Temp.. (oC/oF).
- \* Light: 0 to 20,000 Lux, 0 to 1,660 Ft-cd, auto range. Temp.

**PEN VIBRATION METER**  
**Model: PVB-820**

- \* Function: Acceleration, Velocity.
- \* Acceleration : 200 m/s<sup>2</sup>, 20.00 G.
- \* Velocity : 200 mm/s, 20.00 cm/s.
- \* Frequency : 10 Hz to 1 KHz.



**Pen UV Meter**  
**Model: PUV-360**

- \* Calibration is under UVA light.
- \* Spectrum: 290 nm to 390 nm
  - \* UVA & UVB measurement.
  - 2 mW/cm<sup>2</sup> x 0.001 mW/cm<sup>2</sup>.
  - 20 mW/cm<sup>2</sup> x 0.01 mW/cm<sup>2</sup>.
- \* Data hold, Record (Max., Min.).



**O2 METER, pen type**  
**Model: PO2-250**

- \* O2 (Oxygen in air), Temperature.
- \* O2 range: 0 to 30.0 % x 0.1 %.
- \* Temperature. : 0 to 50 oC, oC/oF.
- \* Measurement response time: 30 seconds.
- \* DC 1.5V battery (UM-4, AAA) x 4.



**CO METER, Pen type**  
**Model: PCO-350**

- \* CO (Carbon monoxide), Temperature.
- \* CO range: 0 to 1,000 ppm.
- \* Temperature. : 0 to 50 oC, oC/oF.
- \* CO response time: 30 seconds.
- \* Data hold.



**Pen Soil PH Meter**  
**Model: PH-220S**

- \* Complete set with separate soil, spear tip pH electrode and pH 4 and pH 7 standard solution.
- \* Meter: 0 to 14 pH x 0.01 pH.
- Electrode: 1 to 13 pH.
- \* Auto calibration for pH 4, pH 7 or pH 10.



**Soil Moisture Meter**  
**Model: PMS-714**

- \* Soil moisture content measurement.
- \* Range: 0 to 50 % moisture content.
- Heavy duty probe, probe length: 20cm.
- \* Hold, Record (max., min.).

**TURBIDITY METER**  
**Model: TU-2016**

- \* Range: Auto range, two ranges, 0.00 to 50.00 NTU, 50 to 1,000 NTU.
- \* Resolution: 0.01 NTU/1 NTU.
- \* Accuracy: 5 % F.S. or 0.5 NTU, whichever is greater.
- \* Light source: LED, 850 nm.
- \* Record Max, Min value.



**Photo/Contact Tachometer**  
**Model: DT-2268**

- \* Photo teach.: 5 to 100,000 RPM
- Contact teach.: 0.5 to 19,999 RPM.
- Surface speed : m/min, ft/min.
- \* Large LCD display, 20 mm digit height.
- \* Laser light beam for Photo tachometer.



**Power Analyzer base**  
**Model - DW-6093**

- Analysis for 3 phase multi power systems 1P/2W, 1P/3W, 3P/3W and 3P/4W
- Current clamps 20/200/1200 amps - optional current clamps can be matched with DW6093 to 3000amps (3 X LU-CP3000 required)





### Carbon Dioxide Meter CO2 METER, Temperature. Model: GC-2028

- \* CO2 range : 0 to 4,000 ppm.
- \* CO2 sensor : NDIR, long term reliability.
- \* CO2 with alarm setting.
- \* Function : CO2 (Carbon dioxide), Dew point, Temperature.
- \* Data hold, Record (Max., Min.)



### CO METER Model : GCO-2008

- \* CO (Carbon monoxide), Temperature.
- \* CO range : 0 to 1,000 ppm.
- \* Temperature. : 0 to 50 oC, oC/oF.
- \* CO response time : 30 second.
- \* Data hold Record (Max., Min.).



### MOISTURE METER, all in one, bar graph LED + LCD Model : MS-7003

- \* Wood and concrete moisture measurement.
- \* Wood material : 6 % to 40 % moisture content.
- \* Concrete material : 0 % to 100 % moisture content.

### MOISTURE METER Model : MS-7000

- \* Range: 9% to 30% moisture content.
- \* 9 material species groups in memory.
- \* Max., Min., Data hold, Self-calibration.
- \* Size: 180 x 72 x 32 mm. RS-232.



### Lux Meter/LIGHT METER Model : LX-100

- \* LX-100 : 2,000 Lux, 20,000 Lux.
- \* Sensor meet C.I.E. photonic spectrum .
- \* Economical cost, professional quality.
- \* Separate probe.
- \* Size : 131 x 70 x 25 mm.



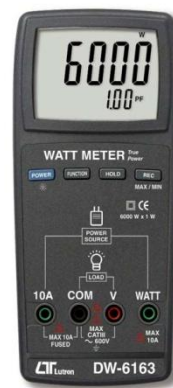
### Lux Meter/Light Meter Model: LX-101AS

- \* LX-100 : 2,000 Lux, 20,000 Lux.
- \* Sensor meet C.I.E. photonic spectrum .
- \* Economical cost, professional quality.
- \* Separate probe.
- \* Size : 131 x 70 x 25 mm.



### VIBRATION METER Model : VB-8200

- \* Separate professional vibration sensor.
- \* Velocity : 200 mm/s.
- \* Acceleration : 200 m/s<sup>2</sup>.
- \* RMS, Peak, RS232, Hold, Record (Max., Min.).



### Watt Meter Model: DW-6163

- \* True power measurement.
- \* True rms measurement for ACV, ACA
- \* Watt : 0 to 6000 W x 1 W
- \* Power factor : 0.01 to 1.00 x 0.01P
- \* ACV : 0 to 600 V X 0.1 V.
- \* ACA : 0 to 10.00 A x 0.01 A.



### HUMIDITY METER Model : MY-91HT

- \* Measurement : Humidity, Temp., Dew point.
- \* Humidity range: 10 % to 95 % R.H.
- Temp. range: 0oC to 50oC, 32oF to 122oF.
- Dew point range: -25.3oC to 48.9oC.
- \* Resolution: 0.01% RH, 0.01degree.



### pH/ORP, DO, CD/TDS METER Bench type RS23/USB, Data recorder Model : WA-2015

- \* Professional bench meter for multi-function: pH/ORP, Conductivity/TDS, Dissolved oxygen.



### MILLIOHM METER Model : MO-2001

- \* 200 m /2000 m /20 /200 /2000 .
- \* 4 terminal input, high accuracy.
- \* Size : 160 x 120 x 85 mm.
- \* 4 wire with 2 kelvin clips, KV-05 is included.
- \* Power : AC 110V or AC 220V/AC230 V



### MILLIOHM METER Model : MO-2002

- \* 20m /200m /2 /20 /200 /2K /20K
- \* HI / LO warning setup.
- \* Large red LED display, 20.4 mm digit height.
- \* 4 terminal input, high accuracy.







**POWER ANALYZER, Bench type**

**Model : DW-6090A**

- \* Large LCD, multi-displays.
- \* True rms for WATT, ACV, ACA.
- \* Watt, VA, Power factor, ACV, ACA, VAR, Whr, DCV, DCA, ohms, RS-232.
- \* Accept current probe & CT input. Battery power.



**STROBOSCOPE XENON, AC power or Battery power, + photo Tachometer, 2 in 1**  
**Model : DT-2289**



**STROBOSCOPE, XENON, AC power or Battery power, + photo Tachometer, 2 in 1**  
**Model : DT-2289**

- \* Stroboscope use high intensity XENON tube.
- \* LCD display with back light.
- \* Stroboscope range : 100 to 15,000 RPM.

**Pen type WATER HARDNESS PURE WATER METER**  
**Model : PWH-303**

- \* Separate Pt glass electrode, high performance for pure water low conductivity measurement.



**Conductivity, TDS, Salt, Hardness, Resistivity SD card real time data recorder**  
20 uS/200 uS/2 mS/20 mS/ 200 mS  
**WATER HARDNESS / PURE WATER METER**  
**Model : CD-4319SD**



**Bench type, SD Card real time data recorder pH/ORP METER**  
**Model : BPH-241SD**



**Bench type, SD Card real time data recorder CD / TDS / Hardness / Resistivity CONDUCTIVITY METER**  
**Model : BCT-4320SD**



**Bench type, SD Card real time data recorder DISSOLVED OXYGEN METER**  
**Model : BDO-5513SD**



**Bench type, SD Card real time data recorder pH/ORP, DO, CD/TDS/Hardness, Salt METER**  
**WATER QUALITY METER**  
**Model : BWA-2018SD**

**Hanna HI98107 PH Meter**

- Technical data:  
Measuring range: 0.00~14.00pH  
Resolution: 0.1pH  
Accuracy: ±0.1pH  
Calibration: 1point  
Power: 4x1.5v alkaline  
Auto shut-off: Approx. 4minutes  
Dimension: 175x41x23mm



**Hanna HI98301 DiST1 EC and TDS Tester**

- DiST's are rugged and reliable pocket-sized testers that offer quick and accurate readings of conductivity or TDS Graphite electrodes; ATC Simple one point calibration Easy to use; economical Measures 1-19/32" length by -57/64" width by 6-57/64" height



**Hanna HI 8424 Portable pH/ORP Meter**

- Hanna Instruments HI 8424. Handheld waterproof pH/mV/C meter with automatic calibration. Possibly the most sold pH meter of all time and any brand globally. A reliable basic instrument, nothing extra, nothing lacking.





**Hanna HI-8733**  
**HI-8733 Portable Multi-range Conductivity Meter**  
The HI-8733 is suitable for quality control testing, sample testing in the field and pure water testing.



**Hanna HI-9146**  
**Portable Dissolved Oxygen Meter**



**Hanna HI 2210 pH/C meter**  
The HI 2210 bench top pH meter from HANNA are an affordable solution for laboratory testing without compromising accuracy. This instrument features an extra large (6.5" x 1.5") LCD which displays Ph

**Hanna HI-2300**  
**Conductivity, TDS, NaCl and Temperature Meter**

The Hanna HI-2300 measures conductivity, TDS (Total Dissolved Solids), percentage of NaCl and temperature. If required, the meter can be connected to a computer using the RS232 port.



**HANNA HI-2400**  
**Bench-top Dissolved Oxygen Meter**

Ideal for professional dissolved oxygen monitoring, the HI-2400-02 is a top of the range bench top meter offering readout in mg/L or % saturation and automatic calibration together with the ability to store up to 8000 samples.



**Labcom V300**  
**Oil Free Vacuum Pump**



**Labcom MS-PB**  
**Classic Magnetic Stirrer**

- Speed range of 0-1500 rpm
- Max. stirring quantity 3L
- ABS casing with fire retardant material, resistance of weak acid and alkali



**Labcom MS-H-S**  
**Classic Magnetic Hotplate Stirrer**

- Stainless steel with ceramic coated hotplate resists to corrosion
- Separated safety circuit, automatically stop heating when temperature over 350°C



**Labcom MS-H280-Pro**  
**LED Digital Magnetic Hotplate Stirrer**

- Heating temperature up to 280°C
- Stainless steel with ceramic coated hotplate resists to corrosion

**Labcom HP550**  
**LED Digital Hotplate**

- LED displays target and actual temperatures
- Temperature up to 550°C.
- Separate safety circuits with fixed safety temperature of 580°C
- PT1000 external temperature sensor is available. The control accuracy is ±0.5°C



**Labcom MS7-H550-S**  
**LED Digital Magnetic Hotplate Stirrer**

- LED display target and actual temperatures
- External temperature sensor PT1000 is available, display and control actual medium temperature, control accuracy of ±1°C



**Labcom OS40-S**  
**LED Digital Overhead Stirrer**

- High reliability, long continuous service, outstanding performance
- Cover the speed range from 0 to 2200rpm, the speed is accurate and controlled - Brushless DC motor drive, low noise and maintenance free - LED displays actual speed



## Electrical Measurement Equipment



**Fluke 116 Digital Multimeter**  
Built-in thermometer for HVAC applications  
Micro amps to test flame sensors  
Low input impedance: helps prevent false readings due to ghost voltage  
Large white LED backlight to work in poorly lit areas



**Fluke 175 True RMS Digital Multimeter**  
Manual and automatic ranging  
Display Hold and Auto Hold  
Frequency and capacitance measurements  
Resistance, continuity and diode measurements  
Min-max-average recording



**Fluke 179 True RMS Digital Multimeter**  
Manual and automatic ranging  
Display Hold and Auto Hold  
Frequency and capacitance measurements  
Resistance, continuity and diode measurements  
Temperature measurements (179)  
Min-max-average recording

**Fluke 87V Industrial Multimeter**  
Unique function for accurate voltage and frequency measurements on adjustable speed motor drives and other electrically noisy equipment  
Built-in thermometer conveniently allows you to take temperature readings without having to carry a separate instrument



**Fluke 289 True-RMS Industrial Data Logging Multimeter**  
The Fluke 289 Industrial logging multimeter allows you to log and zoom in on problems. Now compatible with the fluke connect mobile apps.



**Fluke 376 True-rms AC/DC Clamp Meter with iFlex™**  
iFlex flexible current probe expands the measurement range to 2500 A ac  
CAT IV 600 V, CAT III 1000 V  
True-rms ac voltage and current for accurate measurements on non-linear signals



**Fluke 62 MAX/62 MAX+ Infrared Thermometer**  
62 MAX: -30 °C to 500 °C (-22 °F to 932 °F)  
62 MAX+: -30 °C to 650 °C (-22 °F to 1202 °F)



**Fluke TIS20-9Hz Industrial Commercial Thermal Imager with Fixed Focus**  
Capture incredibly detailed images that help identify potential issues with the TIS20. This camera features a fixed focus, 5MP camera and a 3.5" ruggedized display.



**Fluke Ti400 Infrared Camera**  
Powerful high-performance features make troubleshooting fast and easy. As always Fluke SmartView® software is included at no additional charge.



**Hioki 3244  
Card HiTester Digital  
Multimeter**

Only 9.5 mm(0.37 in) thick and 60 g(2.1 oz) in weight  
4199 count display



**Hioki DT4252  
True-RMS Digital Multimeter  
1000V AC/DC, 10A Direct Input  
with Capacitance & Frequency**  
±0.3% DC V basic accuracy, wide 40 Hz to 1 kHz AC V frequency characteristics



**Hioki DT4281  
True-RMS Digital Multimeter  
1000V AC/DC, 60,000 Count,  
Advanced Electrical Testing**  
60000 count, 5-digit display, high-resolution measurements

**Hioki 3280-10F  
AC Clamp Meter**

Easy Operation 1000 A rms, clamp aperture: 33 mm (1.30") diameter  
Light - 100 g (3.5 oz), and Slim - 16mm (0.63 in)  
Auto ranging, data hold function, auto power save function, battery life warning function  
max.4199-count LCD display



**Hioki 3282  
True-RMS AC Digital Clamp  
Meter 600V/1000A with  
Frequency and Resistance**  
Measure current up to 1000A  
Multi-functional testing of AC current, voltage, frequency, resistance



**Hioki 3288-20  
True-RMS AC/DC Clamp  
Meter 600V/1000A with  
Resistance and Continuity**  
True RMS measurement  
Voltage, resistance, and continuity check functions  
High current measurements such as UPS emergency batteries and train motors  
Slim core of only 10 mm



**Hioki 3287  
True-RMS AC/DC Clamp  
Meter 600V/100A with  
Resistance and Continuity**  
True RMS rectification  
Accurately measure even small currents with 10 A range  
Voltage, resistance, and continuity check function



**Hioki 3286-20  
True-RMS Power Clamp  
Meter, 600V/1000A with  
Frequency**  
Use as a single-phase power meter or power factor meter (3kW to 600kW range)  
Simple checking of three-phase lines (6kW to 1200kW range)



**Hioki IR4056-20 5-Range  
Digital Insulation Resistance  
Tester 1000V DC with Continuity  
Check**  
The Hioki IR4056 is a 5-range, 50V to 1000V digital insulation resistance tester with efficient functions and features to help shorten work time associated with field insulation testing.

**Kyoritsu 1009  
Digital Multimeters**

- Display : 4000 counts.
- Auto range and manual range selector provided. (with range hold feature)
- Resistance range provides audible continuity test.
- Automatically turns power off in about 30 minutes to conserve



**Kyoritsu KEW 1021R  
Digital Multimeters**

- Elegant and easy-to-use cabinet
- Large display with 6000 counts and Backlight
- Enhanced current measuring function using an external clamp sensor
- Two detachable holders, flat and wing type



**Kyoritsu 2002PA  
AC Digital Clamp Meters**

- Can measure large AC current up to 2000A.
- Peak hold function.
- 55mm-dia large tear drop shaped jaws.





**Kyoritsu KEW 2003A  
AC/DC Digital Clamp Meters**

- Equipped to measure both AC and DC current with transformer jaws of large diameter.
- Can measure AC and DC currents up to 2000A.
- Output terminal for connection to recorders.



**Kyoritsu 8031CE  
Phase Indicators**

- Digital Phase Indicator with open phase checker.
- Phase indicator designed to check the presence of open phase and also the phase sequence by LED and buzzer at the same time.
- Small, lightweight, and portable.



**Kyoritsu 3005A  
Digital Insulation/Continuity Testers**

- Bargraph to display insulation resistance.
- Displays the value of external AC voltage along with flashing symbol.

**Kyoritsu KEW 3125A  
High Voltage Insulation Testers**

- Insulation Resistance up to 1TΩ
- Short-Circuit Current up to 1.5mA
- Wide Test Voltage from 250V to 5000V
- Diagnosis Function of PI and DAR
- Newly-designed alligator clip
- It comes with a tough hard case



**Kyoritsu 4105A  
Earth Testers**

- Dust and drip proof.(designed to IEC 60529 IP54)
- In addition to the facility for precision measurement, test leads for simplified two wire measuring system also supplied as standard accessories



**Sanwa PM-3  
Digital Multimeter/Pocket Type**

8.5mm thick body with multi-function  
3-3 / 4 digits 4000 count  
0.7% best accuracy  
Duty cycle, Data hold, Relative value  
Auto power off (15min.) (cancelable)  
Display : numeral display 4000



**Sanwa YX-360TRF  
Analog Multimeter**

Drop shock proof meter  
Null (zero center) meter  $\pm 5 / \pm 25$  in DCV, High resistance up to 200MΩ with low voltage, Protective body cover, Capacitance, dB, Li measurement , Bandwidth : 30~100kHz (AC10V)



**Sanwa CD-800a  
Digital Multimeters**

3-3 / 4 digits 4000 count  
0.7% best accuracy  
Capacitance measurement  
※Not suitable for measurement of condensers with large leak current.  
Frequency measurement (AC sine wave only)



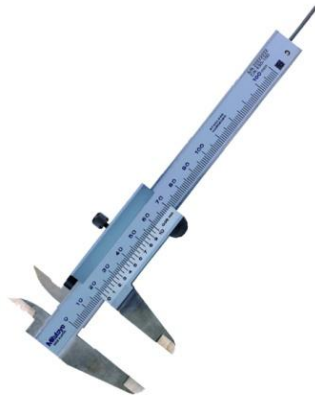
**Sanwa CD-772  
Digital Multimeter**

Display : numeral display 4000  
Sampling rate : 3 times / sec.  
AC frequency bandwidth : 45~500Hz (4V range), 45~1KHz (40V range and above)



**Sanwa SE-300  
Non-contact type digital tachometer**

- Designed for ease of holding to enable stable measurement
- Max/Min value hold
- Auto power off (2min.) (cancelable)
- Fixed installation possible using a commercially available camera tripod



**Mitutoyo Analog Vernier Caliper**  
 These are standard type of vernier caliper that offer you the following benefits:  
 Main scale and vernier scale satin chrome finish gives you high readability.  
 Raised sliding surfaces.



**Mitutoyo Dial Caliper**  
 0-150mm, , 0,02mm, 2mm/rev  
 Item number: 505-730  
 Suggested retail price: 97.00 €\*  
 These calipers allow you to take reliable measurements and offer you the following benefits:  
 Equipped with characters in a new font for easier read-out



**Mitutoyo Digital ABS AOS Vernier Caliper**  
 0-6", Thumb Roller  
 Item number: 500-196-30  
 These Digimatic calipers allow you to take reliable measurements and offer

**Mitutoyo Dial Thickness Gauge**  
 0-20mm, 0,01mm, Standard  
 This metric dial indicator thickness gauge 7331S has a lightweight design.



**Mitutoyo ABS Digital Thickness Gauge**  
 Inch/mm, 0-.4", .0005", Tube Thickness  
 Item number: 547-361S  
 This ABSOLUTE Digimatic Thickness Gauge enables you to measure tube wall thickness.



**Mitutoyo Digital Mini Thickness Gauge**  
 - 0 to 0.5 Inch Measurement, 0.0005 Inch Resolution  
 A compact comparator designed for carrying convenience, it is very suited for quick



**Mitutoyo Digital Micrometer IP65**  
 0-25mm, Digimatic  
 Item number: 293-230-30  
 Suggested retail price: 251.00 €\*  
 This metric micrometer offers outstanding accuracy, with and without data input, and is highly robust.



**Mitutoyo 7010S-10 Magnetic Stand for Dial Test Indicators**  
 Model: 7010S-10  
 Ø8mm, Ø4.5mm, 3/8" DIA.  
 Top of Form  
 Bottom of Form

## Textile Texting Consumable



### Multifibre DW

10 meter Roll  
SDC-UK  
AATCC-USA  
James. H Heal



### SDCE Cotton Lawn Rubbing Fabric

5 x 5 cm 500 piece pack  
SDC/UK  
James. H Heal/UK  
AATCC/USA



### Grey Scale

Change in Color (Includes Assessment Mask)  
Assessing Staining (Includes Assessment Mask)  
Grey Scale for Change in Color  
Grey Scale for Staining  
SDC/UK - James. H Heal/UK - AATCC/USA



### ECE (A) Non-Phosphate ECE (B) Phosphate WOV Detergent TIDE Detergent

SDC/UK - James. H Heal/UK

### SDC Laboratory Chemicals

Lauric Monoisopropanalamide, Dodecyl Sodium Sulphate, Sodium Thiosulphate Anhydrous, Potassium Iodide, Potassium Dihydrogen Phosphate, L-Histidine Monochloride, Monohydrate, Sodium Chloride, Sodium Dihydrogen Orthophosphate Dihydrate, Disodium Hydrogen Orthophosphate Dihydrate



### SDC Phenolic Yellowing

Product Codes:  
Control Fabric 10x3cm 25 piece pack  
BHT Free 63 Micron Film 400x200mm 100 piece pack  
Impregnated Test Papers 50 piece pack  
Glass Plates 100 x 40 x 3mm



### VeriVide's Colour Assessment Cabinet (CAC)

offers immediate colour viewing in consistent, controllable lighting conditions. CACs instantly remove problems caused by the variability of natural daylight



### Aqua-Boy TEM-1 Textile Moisture Meter

Aqua-Boy textile moisture meter measures the moisture content in yarn, fabric rolls, filaments, fiber flocks and more. Easy to use and highly portable, these compact meters deliver instant result



### Digital Textile Moisture Meter DHT-3

The DHT-2 Textile Moisture Meter instantaneously measures the moisture content in fibers, yarns and bales of raw, synthetic or mixed textile material. 17 stored measurement scales for the following materials: wool, rayon, cotton, linen, nylon, acrylic, polyester



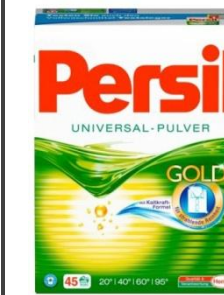
### Pantone TPX Fashion and Home Color Guide FGP200

Pantone TPX color guide FGP200 for non-fabric materials, redesigned for ultimate in color selection and control, all 2,100 TPX colors including all 175 new colors



### Sample GSM Cutters

Sample Cutters cut out specimens of fixed diameter. Specimens may be woven, nonwoven or knitted textiles, carpet, film, foam, paper or board



### Persil Color Pulver Persil Color Megaperls Persil Universal Pulver

### Tide Detergent



### Laboratory Light

D - 65 Artificial Day Light, TL - 84 European Store Light, TL - 83 (Specialized European Store Light, CWF (Cool White Fluorescent Light), UL - 30 - Latest American Commercial narrow band Fluorescent, Illuminant, UV Light (Ultraviolet Light), MBTL Lamp (Mercury Blinded Tungsten Lamp)



### Shrinkage Template Scale

Suitable for all shrink testing standards. Shrinkage Template



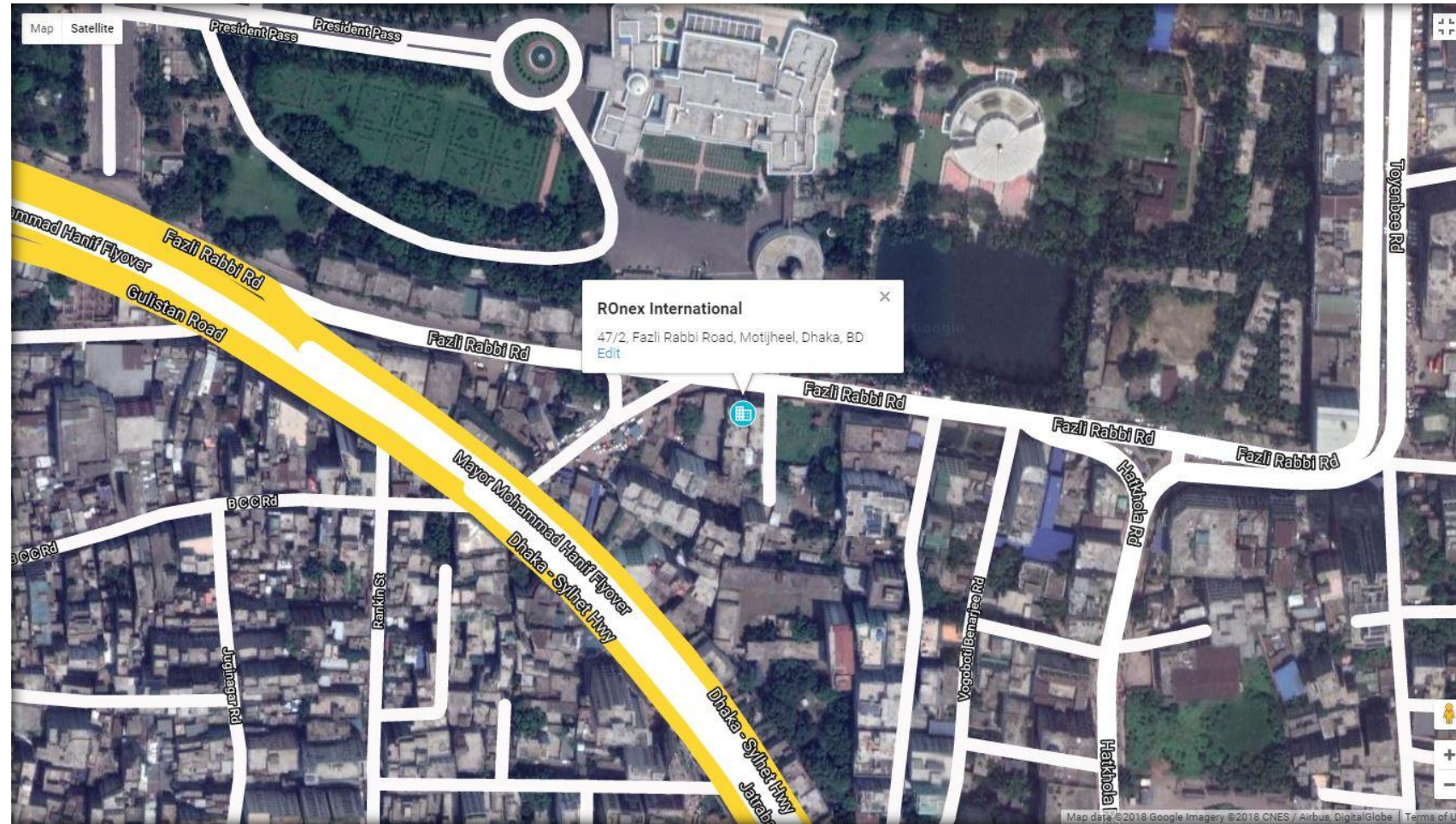
## Mixed Laboratory Equipment

 <p><b>Dehumidifier</b> Brand: White Westinghouse Cap: 30 ltr</p>	 <p><b>Digital Thermometer</b> Brand: Presto Range: 0-300°c</p>	 <p><b>Digital Thermo-Hygrometer</b> Brand: Presto Made in Taiwan</p>	 <p><b>Extech 401025 Foot Candle Lux/Light Meter</b> Model: 401025</p>
<p><b>Draminski Grain Moisture Meter</b> Model: GMM-680</p> 	<p><b>Hashima Needle Detector</b></p> 	<p><b>Laboratory Shaker</b></p> 	<p><b>Magnetic Pen</b></p> 
 <p><b>Atago Brix Refractometer</b></p>	 <p><b>Eye Wash</b></p>	 <p><b>TAKEMURA Soil Moisture Meter</b></p>	 <p><b>Viscosity Cup</b></p>
<p><b>Vortex Mixer</b></p> 	<p><b>Stopwatch</b></p> 	<p><b>Wood Moisture Meter Mastech</b></p> 	<p><b>Wet &amp; Dry Hygrometer Zeal-England</b></p> 



# RONEX Ronex International

"Your Trusted Laboratory Partner"



## Shop Address:

47/2, Fazli Rabbi Road, Motijheel, Dhaka-1000. Bangladesh

Cell: +880 1811155717; 1612526665

Email: ronexbd@gmail.com | Skype: ronexbd

Web: [www.ronexbd.com](http://www.ronexbd.com) | Blog: [ronexbd.wordpress.com](http://ronexbd.wordpress.com)

[Facebook](#) | [Twitter](#) | [Linkedin](#) | [Instagram](#) | [YouTube](#)

