

# GLOBAL FROZEN CHICKEN CATALOG

Sadia



Frozen chicken upper back



Net weight, kg	Primary package	Cut size, g	Packages per carton	Carton weight, kg	Carton dimensions, mm	Shelf life, months	Storage conditions, °C	Freezing type
10.0	carton	90 +	bulk	10.0	560x380x110	18	-18	BF



Frozen chicken lower back



Net weight, kg	Primary package	Cut size, g	Packages per carton	Carton weight, kg	Carton dimensions, mm	Shelf life, months	Storage conditions, °C	Freezing type
10.0	carton	115 +	bulk	10.0	560x380x80	12	-18	BF

BF-BlockFrozen

FROZEN CHICKEN MEAT

## Frozen chicken wing-drumette



Net weight, kg	Primary package	Cut size, g	Packages per carton	Carton weight, kg	Carton dimensions, mm	Shelf life, months	Storage conditions, °C	Freezing type
14.0	carton	35-55	bulk	14.0	560x380x150	12	-18	IQF



Net weight, kg	Primary package	Cut size, g	Packages per carton	Carton weight, kg	Carton dimensions, mm	Shelf life, months	Storage conditions, °C	Freezing type
7.5	vacuum block	24-34	2	15.0	560x380x130	12	-18	BF
15.0	carton	22-32	bulk	15.0	560x380x150	12	-18	BF

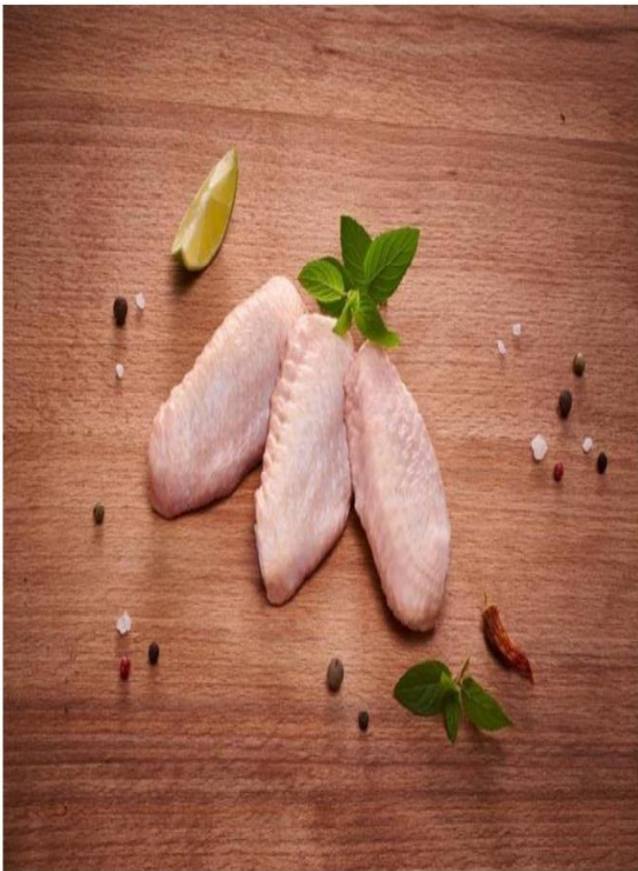
BF - Block Frozen  
IQF - Individually Quick Frozen



### Frozen chicken 2-joint wing (prime&mid)



Net weight, kg	Primary package	Cut size, g	Packages per carton	Carton weight, kg	Carton dimensions, mm	Shelf life, months	Storage conditions, °C	Freezing type
0.9	tray	70+	12	10.8	560x380x150	12	-18	BF
2.5	polybag	70+	6	15.0	560x380x150	12	-18	IQF
14.0	carton	70+	bulk	14.0	560x380x150	12	-18	IQF



### Frozen chicken mid-joint wing



Net weight, kg	Primary package	Cut size, g	Packages per carton	Carton weight, kg	Carton dimensions, mm	Shelf life, months	Storage conditions, °C	Freezing type
2.5	polybag	25-45	6	15.0	560x380x150	12	-18	IQF
7.5	vacuum block	15-25	2	15.0	560x380x110	12	-18	BF
7.5	vacuum block	25-45	2	15.0	560x380x110	12	-18	BF
14.0	carton	25-45	bulk	14.0	560x380x150	12	-18	IQF

BF - Block Frozen  
IQF - Individually Quick Frozen



## Frozen chicken thigh meat (boneless, skinless)



Net weight, kg	Primary package	Cut size, g	Packages per carton	Carton weight, kg	Carton dimensions, mm	Shelf life, months	Storage conditions, °C	Freezing type
2.5	vacuum block	80 +	4	10.0	560x380x80	12	-18	BF
7.5	vacuum block	80 +	2	15.0	560x380x100	12	-18	BF



## Frozen boneless chicken (shawarma)



Net weight, kg	Primary package	Cut size, g	Packages per carton	Carton weight, kg	Carton dimensions, mm	Shelf life, months	Storage conditions, °C	Freezing type
2.5	vacuum block	1.000 +	4	10.0	560x380x80	12	-18	BF

BF-BlockFrozen



## Frozen chicken drumstick



Net weight, kg	Primary package	Cut size, g	Packages per carton	Carton weight, kg	Carton dimensions, mm	Shelf life, months	Storage conditions, °C	Freezing type
0.9	tray	60-110 (calibrated)	12	10.8	560x380x150	12	-18	BF
0.9	tray	80 +	12	10.8	560x380x150	12	-18	BF
2.5	polybag	80 +	6	15.0	560x380x150	12	-18	IQF
14.0	carton	80 +	bulk	14.0	560x380x150	12	-18	BF

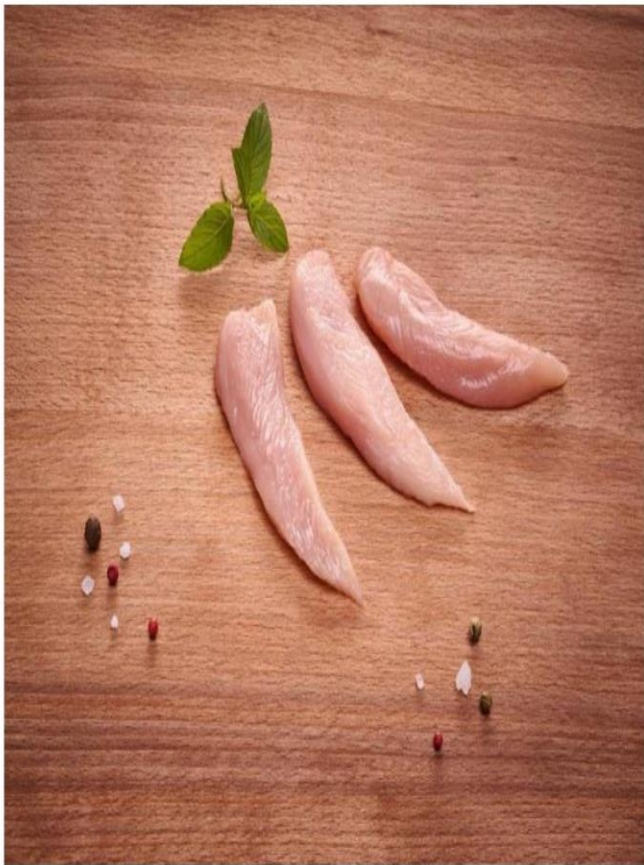


## Frozen chicken thigh



Net weight, kg	Primary package	Cut size, g	Packages per carton	Carton weight, kg	Carton dimensions, mm	Shelf life, months	Storage conditions, °C	Freezing type
0.9	tray	100+	12	10.8	560x380x150	12	-18	BF
2.5	polybag	100+	6	15.0	560x380x150	12	-18	IQF
14.0	carton	100+	bulk	14.0	560x380x150	12	-18	IQF

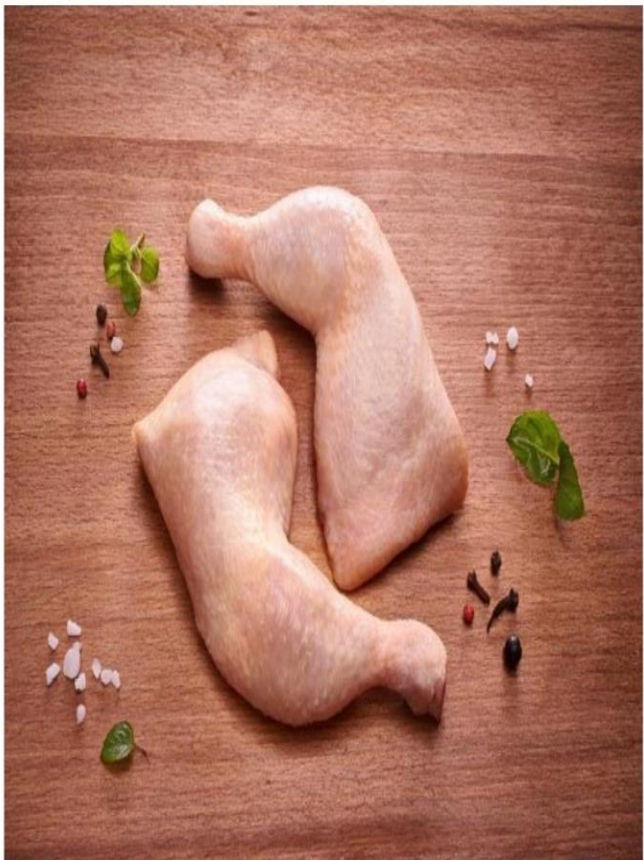
BF - Block Frozen  
IQF - Individually Quick Frozen



## Frozen chicken inner fillet



Net weight, kg	Primary package	Cut size, g	Packages per carton	Carton weight, kg	Carton dimensions, mm	Shelf life, months	Storage conditions, °C	Freezing type
2.5	polybag	40 +	4	10.0	560x380x80	12/24	-18	IQF
7.5	vacuum block	40 +	2	15.0	560x380x110	12/24	-18	BF
2.0	vacuum block	36-64 (calibrated)	4	8.0	560x380x150	12	-18	BF
2.0	vacuum block	44-54 (calibrated)	4	8.0	560x380x150	12	-18	BF
14.0	carton	40 +	bulk	14.0	560x380x150	12	-18	IQF



## Frozen chicken leg quarter



Net weight, kg	Primary package	Cut size, g*	Packages per carton	Carton weight, kg	Carton dimensions, mm	Shelf life, months	Storage conditions, °C	Freezing type
10.0	carton	small	bulk	10.0	560x380x80	12	-18	BF
10.0	carton	medium	bulk	10.0	560x380x80	12	-18	BF
10.0	carton	jumbo	bulk	10.0	560x380x80	12	-18	BF
14.0	carton	450 +	bulk	14.0	560x380x150	12	-18	IQF
15.0	Carton	450 +	bulk	15.0	560x380x150	12	-18	BF

\*uncalibrated

BF - Block Frozen  
IQF - Individually Quick Frozen

## Frozen chicken half breast boneless, skinless\*



Net weight, kg	Primary package	Cut size, g	Packages per carton	Carton weight, kg	Carton dimensions, mm	Shelf life, months	Storage conditions, °C	Freezing type
0.9	tray	90 +	12	10.8	560x380x150	12	-18	BF
0.9	tray	140 +	12	10.8	560x380x150	12	-18	BF
2.5	polybag	90 +	6	15.0	560x380x150	12	-18	IQF
2.5	polybag	140 +	6	15.0	560x380x150	12/24	-18	IQF
2.5	vacuum block	140 +	4	10.0	560x380x110	12	-18	BF
5.0	polybag	140 +	2	10.0	560x380x110	24	-18	IQF
5.0	polybag	70-320 (calibrated, every 20 g)	2	10.0	560x380x110	24	-18	IQF
7.5	vacuum block	140 +	2	15.0	560x380x110	12/24	-18	BF
7.5	vacuum block	180 + (calibrated)	2	15.0	560x380x110	12	-18	BF
14.0	carton	140 +	bulk	14.0	560x380x150	12	-18	IQF
15.0	carton	140 +	bulk	15.0	560x380x150	24	-18	IQF

\*available with or without inner fillet



BF - Block Frozen  
IQF - Individually Quick Frozen



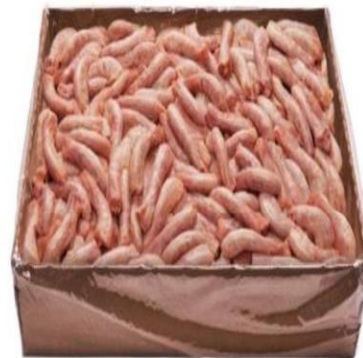
## Frozen chicken gizzard



Net weight, kg	Primary package	Cut size, g	Packages per carton	Carton weight, kg	Carton dimensions, mm	Shelf life, months	Storage conditions, °C	Freezing type
1.0	vacuum block	-	10	10.0	560x380x110	8	-18	BF
10.0	carton	-	bulk	10.0	560x380x80	8	-18	BF



## Frozen chicken neck



Net weight, kg	Primary package	Cut size, g	Packages per carton	Carton weight, kg	Carton dimensions, mm	Shelf life, months	Storage conditions, °C	Freezing type
10.0	carton	-	bulk	10.0	560x380x80	8	-18	BF

BF-BlockFrozen



# Whole frozen chicken without giblets



Net weight, kg	Primary package	Packages per carton	Carton weight, kg	Carton dimensions, mm	Shelf life, months	Storage conditions, °C	Freezing type
0.7	polybag	15	10.5	560x380x110	12	-18	IPBF
0.8	polybag	14	11.2	560x380x110	12	-18	IPBF
0.9	polybag	10	9.0	560x380x110	12	-18	IPBF
1.0	polybag	10	10.0	560x380x110	12	-18	IPBF
1.1	polybag	10	11.0	560x380x110	12	-18	IPBF
1.2	polybag	10	12.0	560x380x110	12	-18	IPBF
1.3	polybag	10	13.0	560x380x110	12	-18	IPBF
1.4	polybag	10	14.0	560x380x110	12	-18	IPBF
1.5	polybag	10	15.0	560x380x130	12	-18	IPBF
1.6	polybag	10	16.0	560x380x130	12	-18	IPBF
1.7	polybag	8	13.6	560x380x130	12	-18	IPBF
1.8	polybag	8	14.4	560x380x130	12	-18	IPBF
1.9	polybag	8	15.2	560x380x130	12	-18	IPBF
2.0	polybag	8	16.0	560x380x130	12	-18	IPBF
2.1	polybag	8	16.8	560x380x130	12	-18	IPBF
2.2	polybag	7	15.4	560x380x130	12	-18	IPBF

IPBF - Individually Poly-Bagged Frozen



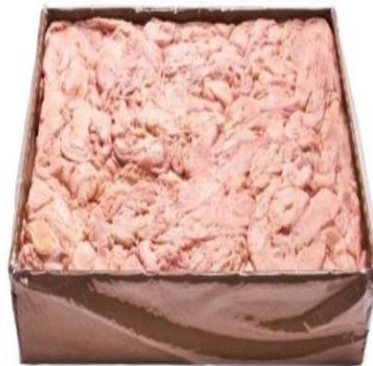
## Frozen chicken mechanically deboned meat (MDM)



Net weight, kg	Primary package	Packages per carton	Carton weight, kg	Carton dimensions, mm	Shelf life, months	Storage conditions, °C	Freezing type
15.0	carton	bulk	15.0	560x380x80	12	-18	BQF
10.0	poly block	bulk	10.0	600x400x75	12	-18	BQF



## Frozen chicken skin



Net weight, kg	Primary package	Packages per carton	Carton weight, kg	Carton dimensions, mm	Shelf life, months	Storage conditions, °C	Freezing type
10.0	poly block	bulk	10.0	600x400x75	8	-18	BQF

BF-BlockFrozen

## Frozen Premium Chicken Burger Breaded



Netweight, kg	Primary package	Calibration (per pcs), g	Meat type	Packages per carton	Carton weight, kg	Carton dimensions, mm	Shelf life, months	Storage conditions, °C	Freezing type
1.00	polybag	100	formed fillet	10	10.0	560x380x130	18	-18	IQF
3.00	horeca bag	100	formed fillet	2	6.0	389x189x220	18	-18	IQF

## Frozen chicken burger breaded



Netweight, kg	Primary package	Calibration (per pcs), g	Meat type	Packages per carton	Carton weight, kg	Carton dimensions, mm	Shelf life, months	Storage conditions, °C	Freezing type
1.00	polybag	100	formed fillet	10	10.0	560x380x130	18	-18	IQF
1.00	horeca bag	100	formed fillet	6	6.0	389x189x220	18	-18	IQF

BF-BlockFrozen

## Frozen Chicken Meatballs



Net weight, kg	Primary package	Calibration (per pcs), g	Meat type	Packages per carton	Carton weight, kg	Carton dimensions, mm	Shelf life, months	Storage conditions, °C	Freezing type
0.35	carton box	55-65	formed fillet	12	4.2	560x380x130	18	-18	IQF

## Frozen crispy chicken wings



Netweight, kg	Primary package	Calibration (per pcs), g	Meat type	Packages per carton	Carton weight, kg	Carton dimensions, mm	Shelf life, months	Storage conditions, °C	Freezing type
1.00	polybag	55-65	wings drumette	10	10.0	560x380x130	18	-18	IQF
1.00	horeca bag	55-65	wings drumette	6	6.0	389x189x220	18	-18	IQF

BF-BlockFrozen

## Frozen Chicken Burger



Netweight, kg	Primary package	Calibration (per pcs), g	Meat type	Packages per carton	Carton weight, kg	Carton dimensions, mm	Shelf life, months	Storage conditions, °C	Freezing type
0.75	polybag	50	formed fillet	6	10.0	360x232x176	18	-18	IQF
1.00	horeca bag	56	formed fillet	10	10.0	452x312x192	18	-18	IQF

## Frozen chickenfranks



Net weight, kg	Primary package	Calibration (per pcs), g	Meat type	Packages per carton	Carton weight, kg	Carton dimensions, mm	Shelf life, months	Storage conditions, °C	Freezing type
0.34	polybag	34	formed fillet	24	8.2	250x320x150	12	-18	IQF

BF-Block Frozen

## Frozen Chicken Nuggets



Netweight, kg	Primary package	Calibration (per pcs), g	Meat type	Packages per carton	Carton weight, kg	Carton dimensions, mm	Shelf life, months	Storage conditions, °C	Freezing type
0.30	carton box	25	formed fillet	12	3.6	389x189x220	18	-18	IQF
1.00	polybag	25	formed fillet	10	10.0	560x380x130	18	-18	IQF
1.00	horeca bag	25	formed fillet	6	6.0	389x189x220	18	-18	IQF
3.00	horeca bag	25	formed fillet	2	6.0	389x189x220	18	-18	IQF

## Frozen Chicken Fillet Breaded



Netweight, kg	Primary package	Calibration (per pcs), g	Meat type	Packages per carton	Carton weight, kg	Carton dimensions, mm	Shelf life, months	Storage conditions, °C	Freezing type
0.42	carton box	45	formed fillet	12	5.0	389x189x220	18	-18	IQF
1.00	polybag	45	formed fillet	10	10.0	560x380x130	18	-18	IQF

BF-Block Frozen

Products are certified with HALAL, ISO 9001:2008, FSSC 22000:2010, ISO 22000, EU approved

Storage conditions: -18°C and lower

Shelf life: 12 -24 months



## **Global Frozen Chicken**

**Tel: (27) 9624-9256**

**Tel: +55 11 94977-7657**

**WhatsApp: +55 11 94977-7657**

**Email: [info@globalfrozenchicken.com](mailto:info@globalfrozenchicken.com)**

**Website: <https://globalfrozenchicken.com/>**

**Address: Rua P,s/n, Qda Ind.2/4,lotes 20 ao 24 Bairro Industrial,Cuiabá–Mato Grosso, São Paulo - SP, 01000-000.**